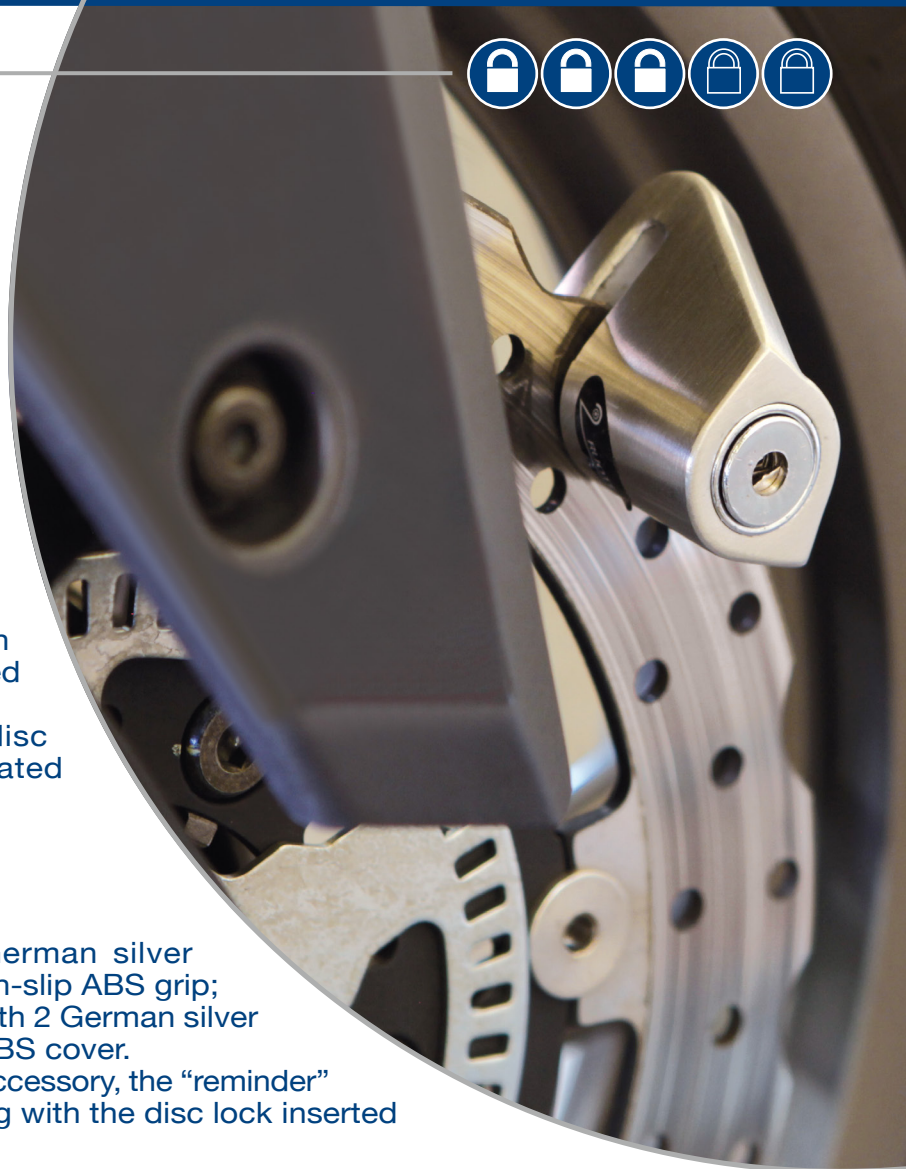




- One-piece, red painted body for item 135 or anodized “steel effect” body for items 136 and 137
- Copper, nickel and chrome-plated steel dead-bolt, Ø 5.5, 6 or 10 mm
- Spring-loaded dead-bolt locking mechanism:
  - item 135 with 7 radial pin copper, nickel and chrome-plated zamak plug;
  - items 136 and 137 with 5 disc copper, nickel and chrome-plated zamak plug
- Keys:
  - item 135 supplied with 2 German silver tubular keys with ergonomic non-slip ABS grip;
  - items 136 and 137 supplied with 2 German silver keys with ergonomic non-slip ABS cover.
 On request, it's available, as an accessory, the “reminder” cable (item 006) to avoid starting with the disc lock inserted



● **Useful and compact; perfect for locking scooters**



Supplied with useful nylon textile bag. Items 136 and 137 supplied with 2 German silver keys with ergonomic non-slip ABS cover

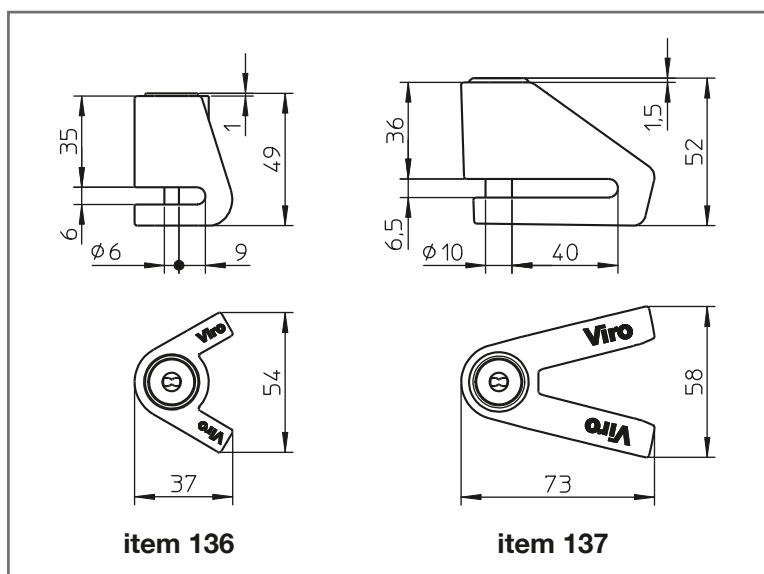
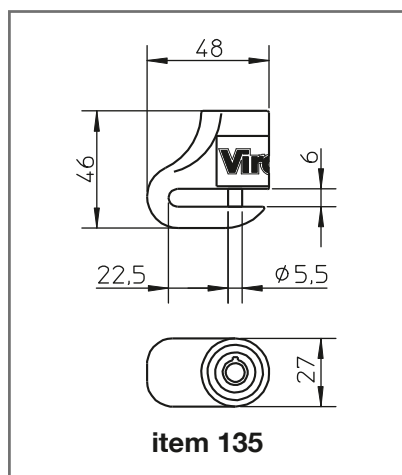
Item 135 supplied with 2 German silver tubular keys with ergonomic non-slip ABS grip

**ITEMS** 135  
136  
137





**DISC LOCK NEW STOPPER MOTO**



ITEM CODE	DEAD-BOLT DIAMETER mm	FINISH	NET UNIT WEIGHT g
135	5.5	RED	330
136	6	STEEL	460
137	10	STEEL	490

