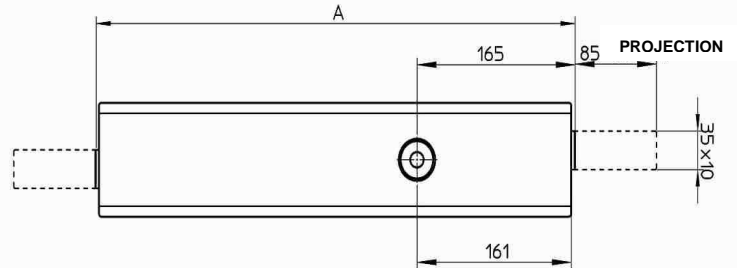


“SPRANGA” FIXED LOCKING BAR



Viro ‘Spranga’ locking bar represents the ideal solution for making an already installed door highly secure without replacing it with an armoured door.

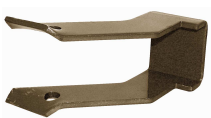


- **Body:** case made of one single sheet-steel 3 mm thick, U-folded. 5 mm thick side guides welded to the case for higher resistance offer the deadbolts inflexible sliding housing.
- **Highest resistance** to flexing and attack with burglary tools.
- **Solid steel deadbolts**, section 35 x 10 mm without welding, slide silently and softly into nylon inserts.
- **Mechanism:** the sliding ratio of the deadbolt is calculated so to grant 8,5 cm throw projection with one turn of the key.
- **Cylinder:** 7 pin round cylinder pair with anti-drill steel plate, with pump working for a perfect resistance to attack with burglary tools. The outside cylinder is protected by casehardened steel armour and equipped with a front plate. Mushroom brass counterpins, pick-resistant.
- **Keys:** supplied with 4 nickel-plated brass keys Viro Top Security profile; key retain: key removable only when the turn is completed to ensure the perfect locking.
- **All special executions are possible, including the ones on the deadbolt length.**

ITEM No.	Lock length mm	Unit weight g
4047	700	7400
4049	750	7815
4051	800	8145
4055	850	8610
4061	900	8730
4061/950	950	9300
4061/1000	1000	9600

SPARE PARTS - ACCESSORIES

Strikers for any requirements



WALL-TYPE (standard) Item 9991



TUBULAR, WALL-TYPE (on request) Item 9993



WOOD-TYPE (on request) Item 9992



WITH DOWELS (on request) Item 9994

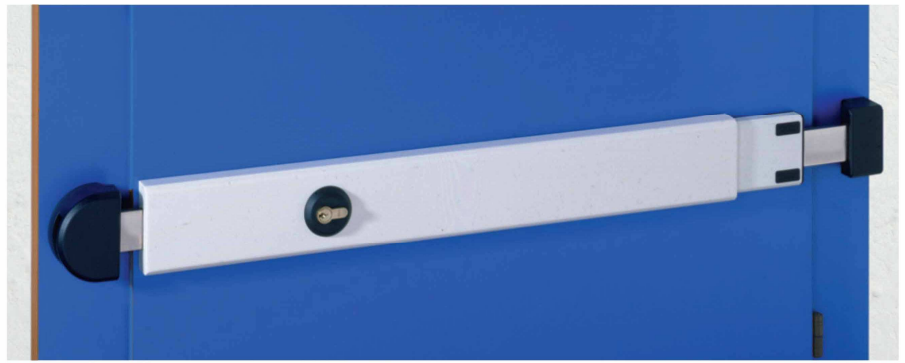
Cylinders (armoured outside with special lengths)



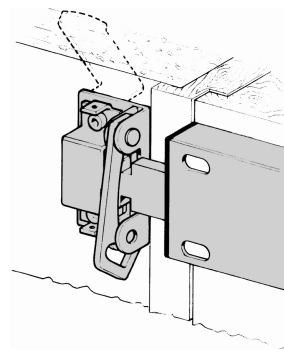
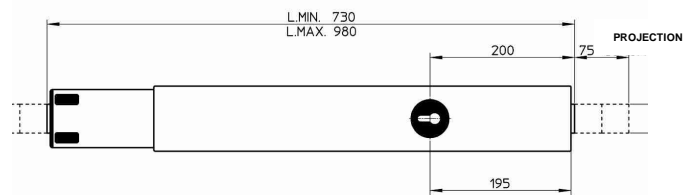
58030340305015-06/2011

## “SPRANGA” ADJUSTABLE LOCKING BAR WITH ANTI-ATTACK DEVICE

Viro ‘Spranga’ locking bar represents the ideal solution for making an already installed door highly secure without replacing it with an armoured door.



- **Body:** case made of one single sheet-steel 1,5 mm thick, U-folded and painted; complete with plastic cover. 5 mm thick side guides welded to the case for higher resistance offer the deadbolts inflexible sliding housing.
- **Steel one piece core-bar** easy to adjust: for doors 73 to 98 cm wide with 40 x 10 mm deadbolts that slide silently and softly into nylon inserts.
- **Highest resistance** to flexing and attack with burglary tools. This item may satisfy all customers' needs, thanks to its adjustable length.
- **Mechanism:** the sliding ratio of the deadbolt is calculated so to grant 7,5 cm throw projection with one turn of the key. With two throws of the deadbolts the bar will lock, while one throw will engage the anti-attack device: the key will be released and may be removed and the door may stay partially opened.
- **Cylinder:** supplied complete with 7-pin massive brass Viro profile security cylinder for 45 to 55 mm thick doors. Mushroom brass counterpins, pick-resistant.
- **Keys:** supplied with 4 nickel-plated Viro Top Security profile keys; key removable only when the turn is completed to ensure the perfect locking.
- **All special executions are possible.**



Supplied complete with **anti-attack device**, which allows to open partially the door for communicating without any risk.

### STANDARD COLOURS

ITEM No.	Unit weight g
4006	8225



Add the required colour code at the end of the item code.  
Example: 4006.159 = WHITE 'SPRANGA' LOCKING BAR.

### SPARE PARTS - ACCESSORIES

**Strikers** to be built-in or to be fixed with dowels (only black colour available).



(standard)  
Item 9995.1



(standard)  
Item 9995.2



(on request)  
Item 9998.1



(on request)  
Item 9998.1

Cylinders  
90,65 mm



**Armour unit without cylinder** both for cylinders with round and european profile, for doors up to 55 mm thick.



Item 4706